

NEW
C5 PRODUCT

Base Mount Masthead Light C-5 Compliant

Designed for sail and power driven vessels under 20 m (65.6 Ft.)

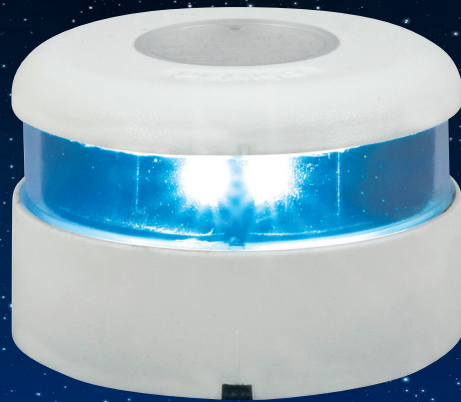
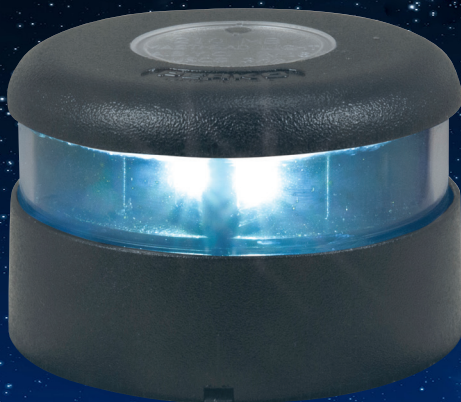


Fig. 0211
Masthead Light
(Base Mount)



Meets Global Specs for:

- ABYC C-5
- NMMA Type Accepted
- EN/ISO 19009:2015
- ABYC A-16 (2016)
- 1972 COLREGS
- RCD 2013/53/EU
- USCG 33 CFR - 3nm

Light Features:

- New High-Tech design with self contained LED modules.
- ABYC C-5 and ISO 19009 compliant.
- Black or White Polymer
- Quality components designed for harsh marine environments.
- 225° Masthead: 3nm

Tech Specs:

- For 12 Volt systems
- Nominal Draw
2.2 watts, .20 Amps

ORDERING INFORMATION

Mount Type	Color	Height Overall	Base Dimensions	Retail Pkg.	OEM Bulk Pkg.
Base Mt.	Black	2-1/4"	3-3/8" OD	0211MB0DPB	0211MB0B01
Base Mt.	White	2-1/4"	3-3/8" OD	0211MB0DPW	0211MB0W01



Tested By: Imanna Labs
Date: 08/11/23



5 Year Warranty



Certified for use on new boats - **USA and Europe**